

## 30-1194: Anti-CD21 Monoclonal Antibody (Clone:LT21)

<b>Clonality :</b>	Monoclonal
<b>Clone Name :</b>	LT21
<b>Application :</b>	FACS
<b>Reactivity :</b>	Human
<b>Gene :</b>	CR2
<b>Gene ID :</b>	1380
<b>Uniprot ID :</b>	P20023
<b>Format :</b>	Purified
<b>Alternative Name :</b>	CR2,C3DR
<b>Isotype :</b>	Mouse IgG1
<b>Immunogen Information :</b>	IM9 human B-lymphoblastoid cell line

### Description

CD21 (complement receptor 2, CR2) binds C3 complement fragments, especially its breakdown fragments, which remain covalently attached to complement activating surfaces or antigen. CD21 has important roles in uptake and retention of immunocomplexes, survival of memory B cells and in development and maintenance of the humoral response to T-dependent antigens. CD21 also serves as a key receptor for Epstein-Barr virus binding and is involved in targeting prions to follicular dendritic cells and expediting neuroinvasion following peripheral exposure to prions. A soluble form of the CD21 (sCD21) is shed from the lymphocyte surface and retains its ability to bind respective ligands.

### Product Info

<b>Amount :</b>	0.1 mg
<b>Purification :</b>	Purified by precipitation and chromatography
<b>Storage condition :</b>	Store at 2-8°C. Do not freeze.

### Application Note

Flow cytometry: Recommended dilution: 1-5 µg/ml.

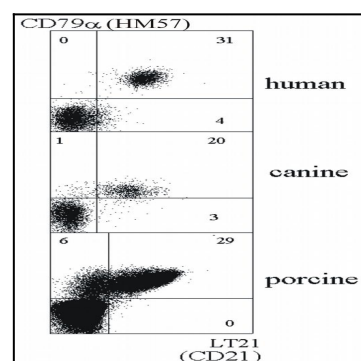


Figure 1: Double staining of human, canine and porcine B lymphocytes with anti-CD79a (HM57) and anti-CD21 (LT21) antibody.