

## 30-2393: Anti-CD206 / MMR Monoclonal Antibody (Clone:15-2)-PE Conjugated

<b>Clonality :</b>	Monoclonal
<b>Clone Name :</b>	15-2
<b>Application :</b>	FACS, IP, WB, IHC-Fr, ICC, Functional Assay
<b>Reactivity :</b>	Human
<b>Conjugate :</b>	PE
<b>Gene :</b>	MRC1
<b>Gene ID :</b>	4360
<b>Uniprot ID :</b>	P22897
<b>Alternative Name :</b>	MRC1,CLEC13D,CLEC13DL,MRC1L1
<b>Isotype :</b>	Mouse IgG1
<b>Immunogen Information :</b>	Purified human mannose receptor

### Description

CD206 (macrophage mannose receptor, MMR), also known as mannose receptor C1 (MRC1), is a type I transmembrane glycoprotein serving as pattern recognition receptor for carbohydrate groups on the surface of bacteria, fungi and other pathogens. Expressed mainly on tissue macrophages and dendritic cells, CD206 mediates endocytosis of these pathogens and presentation of their antigens to the adaptive immune system. CD206 can also be detected in a soluble form in human plasma and is elevated in patients with acute sepsis.

### Product Info

<b>Amount :</b>	100 tests
<b>Storage condition :</b>	Store in the dark at 2-8°C. Do not freeze. Avoid prolonged exposure to light.

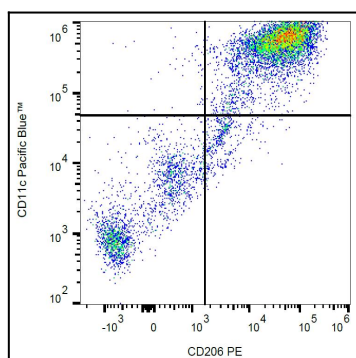


Figure 1: Surface staining of CD206 on human peripheral blood-derived dendritic cells with anti-CD206 (15-2) PE.