

## 30-2321: Anti-CD205 Monoclonal Antibody (Clone:HD30)-PE Conjugated

<b>Clonality :</b>	Monoclonal
<b>Clone Name :</b>	HD30
<b>Application :</b>	FACS, WB, IHC-Fr
<b>Reactivity :</b>	Human
<b>Conjugate :</b>	PE
<b>Gene :</b>	LY75
<b>Gene ID :</b>	4065
<b>Uniprot ID :</b>	O60449
<b>Alternative Name :</b>	LY75, CD205, CLEC13B
<b>Isotype :</b>	Mouse IgG1
<b>Immunogen Information :</b>	Recombinant Fc-tagged human CD205

### Description

CD205, also known as DEC-205, is an endocytic receptor of macrophage mannose receptor family. This 205 kDa C-type lectin transmembrane protein mediates adsorptive uptake and its intracellular domain contains coated pit localization sequence and distal acidic motif, which is required for recycling beyond early endosomes through deeper MHC II+ late endosomes and lysosomes. This unique pathway of receptor-mediated uptake proves to be necessary for presentation of antigenic peptides at low doses of ligand. CD205 is responsible for uptake and processing of captured antigens for dendritic cells.

### Product Info

<b>Amount :</b>	100 tests
<b>Storage condition :</b>	Store in the dark at 2-8°C. Do not freeze. Avoid prolonged exposure to light.

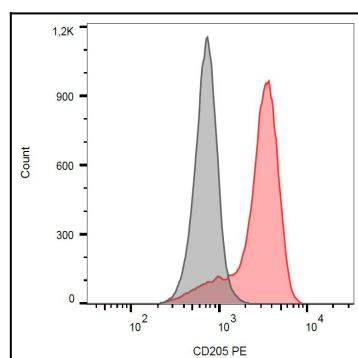


Figure 1: Surface staining of human peripheral blood monocytes with anti-CD205 (HD30) PE.