

## 30-2379PE: PE Conjugated Anti-CD1b Monoclonal Antibody (Clone:SN13)

<b>Clonality :</b>	Monoclonal
<b>Clone Name :</b>	SN13
<b>Application :</b>	FACS
<b>Reactivity :</b>	Human
<b>Conjugate :</b>	PE
<b>Gene :</b>	CD1B
<b>Gene ID :</b>	910
<b>Uniprot ID :</b>	P29016
<b>Alternative Name :</b>	CD1B
<b>Isotype :</b>	Mouse IgG1
<b>Immunogen Information :</b>	A cell membrane antigen preparation that was isolated from normal human thymocytes

### Description

CD1b (also known as R1) together with CD1a and c, belongs to group 1 of CD1 antigens. These non-classical MHC-like glycoproteins serve as antigen-presenting molecules for a subset of T cells that responds to specific lipids and glycolipids found in the cell walls of bacterial pathogens or self-glycolipid antigens such as gangliosides, and they have also roles in antiviral immunity. The trafficking routes of the particular CD1 types differ and correspond to their ability to bind and present different groups of antigens. Besides non-peptide glycolipid antigen presentation to CD1-restricted T cells, CD1b has been implicated in thymocyte development.

### Product Info

<b>Amount :</b>	100 tests
<b>Storage condition :</b>	Store in the dark at 2-8°C. Do not freeze. Avoid prolonged exposure to light.

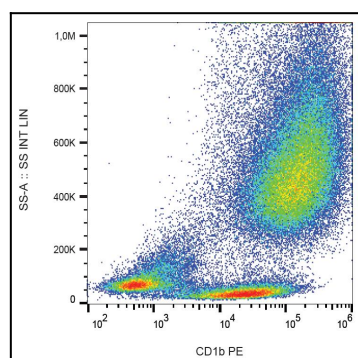


Figure 1: Surface staining of IL-4 and GM-CSF stimulated human peripheral blood cells with anti-human CD1b (SN13) PE.