

30-2106F: FITC Conjugated Anti-CD1b Monoclonal Antibody (Clone:SN13)

Clonality :	Monoclonal
Clone Name :	SN13
Application :	FACS
Reactivity :	Human
Conjugate :	FITC
Gene :	CD1B
Gene ID :	910
Uniprot ID :	P29016
Alternative Name :	CD1B
Isotype :	Mouse IgG1
Immunogen Information :	A cell membrane antigen preparation that was isolated from normal human thymocytes

Description

CD1b (also known as R1) together with CD1a and c, belongs to group 1 of CD1 antigens. These non-classical MHC-like glycoproteins serve as antigen-presenting molecules for a subset of T cells that responds to specific lipids and glycolipids found in the cell walls of bacterial pathogens or self-glycolipid antigens such as gangliosides, and they have also roles in antiviral immunity. The trafficking routes of the particular CD1 types differ and correspond to their ability to bind and present different groups of antigens. Besides non-peptide glycolipid antigen presentation to CD1-restricted T cells, CD1b has been implicated in thymocyte development.

Product Info

Amount :	100 tests
Storage condition :	Store in the dark at 2-8°C. Do not freeze. Avoid prolonged exposure to light.

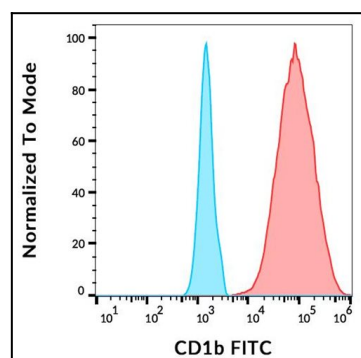


Figure 1: Separation of human CD1b positive dendritic cells differentiated upon monocyte stimulation (GM-CSF + IL-4) (red) from CD1b negative monocytes (blue) in flow cytometry analysis (surface staining) of human stimulated (GM-CSF + IL-4) peripheral blood mononuclear cells stained using anti-human CD1b (SN13) FITC antibody