

## 30-1721: Anti-CD1a Monoclonal Antibody (Clone:HI149)-APC Conjugated

<b>Clonality :</b>	Monoclonal
<b>Clone Name :</b>	HI149
<b>Application :</b>	FACS, IHC-Fr
<b>Reactivity :</b>	Human
<b>Conjugate :</b>	APC
<b>Gene :</b>	CD1A
<b>Gene ID :</b>	909
<b>Uniprot ID :</b>	P06126
<b>Alternative Name :</b>	CD1A
<b>Isotype :</b>	Mouse IgG1
<b>Immunogen Information :</b>	Human thymocytes

### Description

CD1a, together with CD1b and c, belongs to group 1 of CD1 glycoproteins. These proteins serve as antigen-presenting molecules for a subset of T cells that responds to specific lipids and glycolipids found in the cell walls of bacterial pathogens or self-glycolipid antigens such as gangliosides, and they have also roles in antiviral immunity. Unlike CD1b, CD1a is excluded from late endosomal compartments and instead traffics independently in the recycling pathway of the early endocytic system, and CD1a antigen presentation is independent upon vesicular acidification.

### Product Info

<b>Amount :</b>	100 tests
<b>Storage condition :</b>	Store in the dark at 2-8°C. Do not freeze. Avoid prolonged exposure to light.

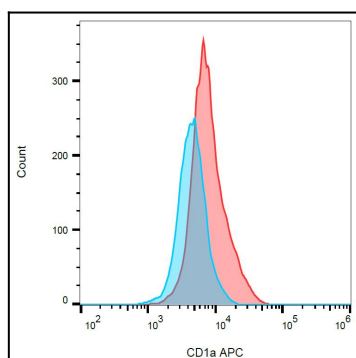


Figure 1: Detection of human CD1a on the surface of MOLT-4 (partially positive, red) and SP2 cells (negative, blue), determined using anti-human CD1a (HI149) APC.