

30-1218: Anti-CD18 / Integrin beta2 subunit Monoclonal Antibody (Clone:MEM-148)

Clonality :	Monoclonal
Clone Name :	MEM-148
Application :	FACS
Reactivity :	Human
Gene :	ITGB2
Gene ID :	3689
Uniprot ID :	P05107
Format :	Purified
Alternative Name :	ITGB2,CD18,MFI7
Isotype :	Mouse IgG1
Immunogen Information :	Peripheral blood mononuclear cells

Description

CD18, integrin beta2 subunit, forms heterodimers with four types of CD11 molecule to constitute leukocyte (beta2) integrins: alphaLbeta2 (CD11a/CD18, LFA-1), alphaMbeta2 (CD11b/CD18, Mac-1, CR3), alphaXbeta2 (CD11c/CD18) and alphaDbeta2 (CD11d/CD18). In most cases, the response mediated by the integrin is a composite of the functions of its individual subunits. These integrins are essential for proper leukocyte migration, mediating intercellular contacts. Absence of CD18 leads to leukocyte adhesion deficiency-1; severe reduction of CD18 expression leads to the development of a psoriasiform skin disease. CD18 is also a target of Mannheimia (Pasteurella) haemolytica leukotoxin and is sufficient to mediate leukotoxin-mediated cytolysis.

Product Info

Amount :	0.1 mg
Purification :	Purified by protein-A affinity chromatography
Storage condition :	Store at 2-8°C. Do not freeze.

Application Note

Flow cytometry: Recommended dilution: 1-5 µg/ml. The antibody MEM-148 is an excellent marker of activated myeloid cells.
Western blotting: Non-reducing conditions.

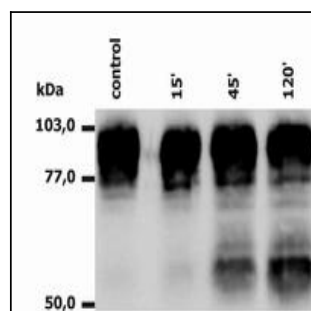


Figure 1: Western Blotting analysis of PMA-activated neutrophils, using anti-human CD18 (MEM-148). The antibody MEM-148 recognizes the lower 65 to 70 kDa zone (activation marker) as well as the upper 78 to 96 kDa zone (CD18).

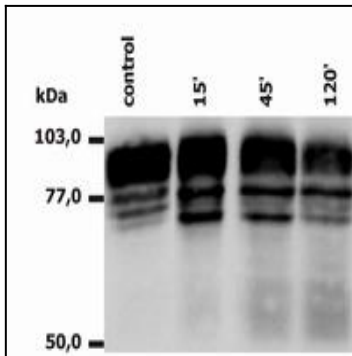


Figure 2: Western Blotting analysis of PMA-activated monocytes, using anti-human CD18 (MEM-148). The antibody MEM-148 recognizes the lower 65 to 70 kDa zone (activation marker) as well as the upper 78 to 96 kDa zone (CD18).