

## 30-1453: Anti-CD163 Monoclonal Antibody (Clone:GHI/61)

<b>Clonality :</b>	Monoclonal
<b>Clone Name :</b>	GHI/61
<b>Application :</b>	FACS
<b>Reactivity :</b>	Human
<b>Conjugate :</b>	Unconjugated
<b>Gene :</b>	CD163
<b>Gene ID :</b>	9332
<b>Uniprot ID :</b>	Q86VB7
<b>Format :</b>	Purified
<b>Alternative Name :</b>	CD163,M130
<b>Isotype :</b>	Mouse IgG1
<b>Immunogen Information :</b>	Hairy cell leukemia cells

### Description

CD163, also known as M130, is a member of the scavenger receptor family, accounting for the clearance of hemoglobin-haptoglobin complexes during limited hemolysis, which protects the body, in particular the kidneys, against heme-mediated oxidative damages. It does not have measurable affinity for noncomplexed hemoglobin or haptoglobin. Immunomodulatory role of CD163 has been postulated. CD163 is expressed by cells of the monocyte-macrophage lineage and its extracellular part also circulates in plasma as a soluble protein, especially during sepsis and other conditions affecting macrophage activity, when its level may raise manyfold.

### Product Info

<b>Amount :</b>	0.1 mg
<b>Purification :</b>	Purified by protein-A affinity chromatography
<b>Content :</b>	1mg/ml, Phosphate buffered saline (PBS), pH 7.4, 15 mM sodium azide
<b>Storage condition :</b>	Store at 2-8°C. Do not freeze.

### Application Note

Flow cytometry: Recommended dilution: 1-4 µg/ml.

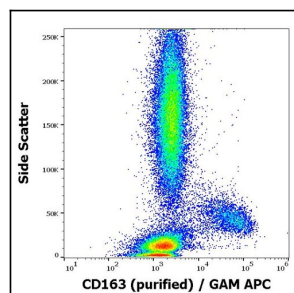


Figure 1: Flow cytometry of PBMC using anti- h CD163 purified antibody