

30-1814: Anti-CD161 Monoclonal Antibody (Clone:HP-3G10)-APC Conjugated

| | |
|--------------------------------|---------------------------|
| Clonality : | Monoclonal |
| Clone Name : | HP-3G10 |
| Application : | FACS, WB |
| Reactivity : | Human, Non-Human Primates |
| Conjugate : | APC |
| Gene : | KLRB1 |
| Gene ID : | 3820 |
| Uniprot ID : | Q12918 |
| Alternative Name : | KLRB1,CLEC5B,NKRP1A |
| Isotype : | Mouse IgG1 |
| Immunogen Information : | human NK cells |

Description

CD161, also known as Nkrp1 (natural killer receptor protein 1) or Klrb1 (killer cell lectin-like receptor subfamily b member 1), is a disulphide-linked homodimeric receptor, which is involved in regulation of NK cell and NKT cell function. It is expressed on a majority of NK cells, NKT cells, and e.g. Th17 cells and CD3+ thymocytes. Although rat CD161 has three isoforms (a, b, c), the human CD161 is expressed as one isoform.

Product Info

| | |
|----------------------------|---|
| Amount : | 100 tests |
| Storage condition : | Store in the dark at 2-8°C. Do not freeze. Avoid prolonged exposure to light. |

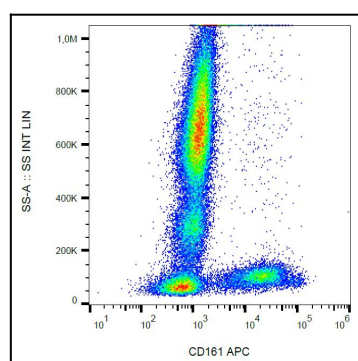


Figure 1: Surface staining of human peripheral blood cells using anti-CD161 (HP-3G10) APC.