

30-2370: Anti-CD160 Monoclonal Antibody (Clone:BY55)-PE Conjugated

Clonality :	Monoclonal
Clone Name :	BY55
Application :	FACS
Reactivity :	Human
Conjugate :	PE
Gene :	CD160
Gene ID :	11126
Uniprot ID :	O95971
Alternative Name :	CD160,BY55
Isotype :	Mouse IgM,kappa
Immunogen Information :	Human NK cell line YT2C2

Description

CD160 is a cell surface glycoprotein of immunoglobulin superfamily, which functions as a costimulatory receptor expressed mainly on cytotoxic cell populations and recognizing both classical and non-classical MHC class I molecules. It can form disulfide-linked multimers. Down-modulation of CD160 occurs as a consequence of its proteolytic cleavage and the released soluble form was found to impair the MHC-class I specific cytotoxicity of CD8+ T lymphocytes and NK cells. In contrast to GPI-anchored isoform with broader expression among CD160 positive cells, expression of the transmembrane isoform is restricted to NK cells and is activation-dependent.

Product Info

Amount :	100 tests
Content :	Stabilizing phosphate buffered saline (PBS), pH 7.4, 15 mM sodium azide
Storage condition :	Store in the dark at 2-8°C. Do not freeze. Avoid prolonged exposure to light.

Application Note

Flow cytometry: The reagent is designed for analysis of human blood cells using 10 µl reagent / 100 µl of whole blood or 10⁶ cells in a suspension. The content of a vial (1 ml) is sufficient for 100 tests.

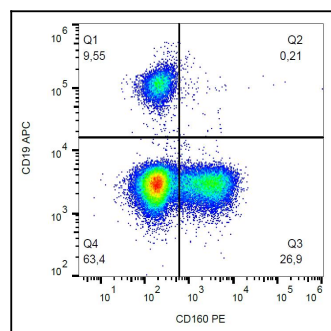


Figure 1: Surface staining of human peripheral blood cells with anti-CD160 (BY55) PE.