

## 30-1997: Anti-CD16 / FcgammaRIII Monoclonal Antibody (Clone:LNK16)-FITC Conjugated

<b>Clonality :</b>	Monoclonal
<b>Clone Name :</b>	LNK16
<b>Application :</b>	FACS, IP
<b>Reactivity :</b>	Human, Non-Human Primates
<b>Conjugate :</b>	FITC
<b>Gene :</b>	FCGR3A
<b>Gene ID :</b>	2214
<b>Uniprot ID :</b>	P08637
<b>Alternative Name :</b>	FCGR3A,CD16A,FCG3,FCGR3,IGFR3
<b>Isotype :</b>	Mouse IgG1
<b>Immunogen Information :</b>	Normal human peripheral blood granulocytes

### Description

CD16 (FcgammaRIII) is a 50-65 kDa glycoprotein serving as a low affinity IgG receptor. Human FcgammaRIII is expressed in two forms - FcgammaRIII-A and -B. FcgammaRIII-A is a transmembrane protein of monocytes, macrophages, NK cells and a subset of T cells. It is associated with FcepsilonRI-gamma subunit and is responsible for antibody-dependent NK cell cytotoxicity. Mast cell FcgammaRIII-A is associated, moreover, with FcepsilonRI-beta subunit. Besides IgG, FcgammaRIII-A can be triggered also by oligomeric IgE. FcgammaRIII-B is a GPI-linked monomeric receptor expressed on neutrophils and is involved in their activation and induction of a proadhesive phenotype.

### Product Info

<b>Amount :</b>	100 tests
<b>Storage condition :</b>	Store in the dark at 2-8°C. Do not freeze. Avoid prolonged exposure to light.

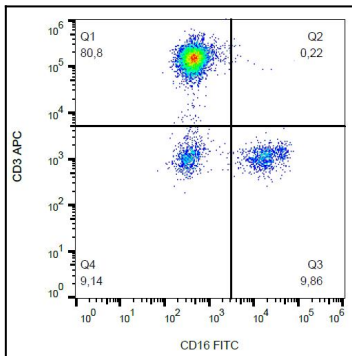


Figure 1: Surface staining of human peripheral blood cells with anti-CD16 (LNK16) FITC.