

## 30-1778: Anti-CD16 / Fcγ<sub>3</sub> Monoclonal Antibody (Clone:3G8)-APC Conjugated

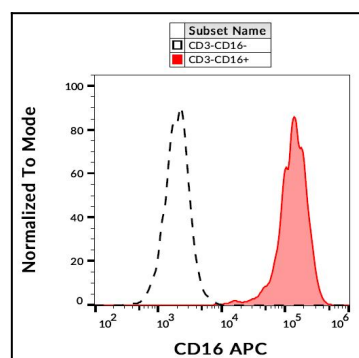
<b>Clonality :</b>	Monoclonal
<b>Clone Name :</b>	3G8
<b>Application :</b>	FACS
<b>Reactivity :</b>	Human
<b>Conjugate :</b>	APC
<b>Gene :</b>	FCGR3A
<b>Gene ID :</b>	2214
<b>Uniprot ID :</b>	P08637
<b>Alternative Name :</b>	FCGR3A,CD16A,FCG3,FCGR3,IGFR3
<b>Isotype :</b>	Mouse IgG1
<b>Immunogen Information :</b>	Human neutrophils

### Description

CD16 (Fcγ<sub>3</sub>) is a 50-65 kDa glycoprotein serving as a low affinity IgG receptor. Human Fcγ<sub>3</sub> is expressed in two forms - Fcγ<sub>3</sub>A and -B. Fcγ<sub>3</sub>A is a transmembrane protein of monocytes, macrophages, NK cells and a subset of T cells. It is associated with Fcε<sub>1</sub>γ<sub>1</sub> subunit and is responsible for antibody-dependent NK cell cytotoxicity. Mast cell Fcγ<sub>3</sub>A is associated, moreover, with Fcε<sub>1</sub>γ<sub>2</sub> subunit. Besides IgG, Fcγ<sub>3</sub>A can be triggered also by oligomeric IgE. Fcγ<sub>3</sub>B is a GPI-linked monomeric receptor expressed on neutrophils and is involved in their activation and induction of a proadhesive phenotype.

### Product Info

<b>Amount :</b>	100 tests
<b>Storage condition :</b>	Store in the dark at 2-8°C. Do not freeze. Avoid prolonged exposure to light.



Flow cytometry analysis (surface staining) of CD16 in human peripheral blood with anti-CD16 (3G8) APC.