

30-1922: Anti-CD157 Monoclonal Antibody (Clone:SY11B5)-FITC Conjugated

Clonality :	Monoclonal
Clone Name :	SY11B5
Application :	FACS, IP, WB, IHC-Fr
Reactivity :	Human, Non-Human Primates
Conjugate :	FITC
Gene :	BST1
Gene ID :	683
Uniprot ID :	Q10588
Alternative Name :	BST1
Isotype :	Mouse IgG1
Immunogen Information :	Human CD157

Description

CD157 (cADPr hydrolase 2) is a GPI-anchored ectoenzyme possessing ADP-ribosyl cyclase and cyclic ADP-ribose hydrolase activity. It uses NAD and cADP-ribose as substrates. CD157 is expressed on granulocytes, monocytes, macrophages, follicular dendritic cells, bone marrow stromal cells and human umbilical cord vein endothelial cells. In case of rheumatoid arthritis is expression is often higher and it is also differentially expressed in the myeloid leukemias. It may also have a signaling role.

Product Info

Amount :	100 tests
Storage condition :	Store in the dark at 2-8°C. Do not freeze. Avoid prolonged exposure to light.

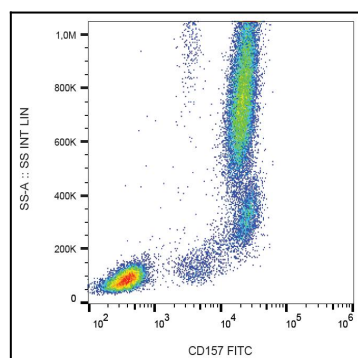


Figure 1 : Surface staining of human peripheral blood leukocytes with anti-human CD157 (SY11B5) FITC.