

30-2396: Anti-CD152 / CTLA4 Monoclonal Antibody (Clone:BN13)-PE Conjugated

Clonality :	Monoclonal
Clone Name :	BN13
Application :	FACS, IP, IHC-Fr, ICC
Reactivity :	Human
Conjugate :	PE
Gene :	CTLA4
Gene ID :	1493
Uniprot ID :	P16410
Alternative Name :	CTLA4,CD152
Isotype :	Mouse IgG2a
Immunogen Information :	Human CD152-IgG heavy chain fusion protein

Description

CD152 / CTLA-4 is a homodimeric transmembrane protein similar to CD28 and binding the same ligands, i.e. CD80 (B7.1) and CD86 (B7.2), but with higher affinity. Unlike CD28 with important costimulating functions, CD152 acts as an important inhibitory receptor essential for modulation of the immune system. CD152 / CTLA-4 becomes transiently expressed on activated T cells and its malfunction can cause autoimmune diseases, such as insulin-dependent diabetes mellitus, Graves disease, Hashimoto thyroiditis, celiac disease, systemic lupus erythematosus, or thyroid-associated orbitopathy.

Product Info

Amount :	100 tests
Storage condition :	Store in the dark at 2-8°C. Do not freeze. Avoid prolonged exposure to light.

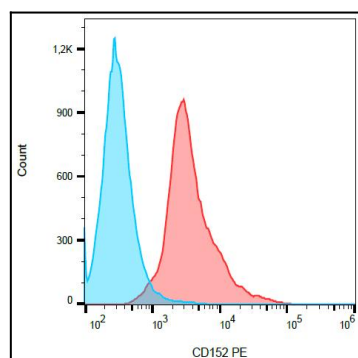


Figure 1: Surface staining of PHA-activated (3 days) human PBMC with anti-human CD152 (BN13) PE.