

## 30-2313: Anti-CD150 Monoclonal Antibody (Clone:SLAM.4)-PE Conjugated

<b>Clonality :</b>	Monoclonal
<b>Clone Name :</b>	SLAM.4
<b>Application :</b>	FACS, IP, ICC
<b>Reactivity :</b>	Human
<b>Conjugate :</b>	PE
<b>Gene :</b>	SLAMF1
<b>Gene ID :</b>	6504
<b>Uniprot ID :</b>	Q13291
<b>Alternative Name :</b>	CDw150, IPO-3, SLAM family member 1, SLAMF1, SLAM
<b>Isotype :</b>	Mouse IgG1
<b>Immunogen Information :</b>	Human CD150-transfected 300.19 cells

### Description

CD150, also known as SLAM (signaling lymphocyte activation molecule) is a 70-95 kDa single chain transmembrane phosphoglycoprotein of the CD2 family. Its extracellular part contains eight potential N-glycosylation sites, and the intracellular tail contains three unique tyrosine-based motifs. These binding sites can be recognized by SH2-binding phosphatases and the adaptor proteins, such as SAP/SH2D1A or EAT-2. The SLAM family receptors are involved in leucocyte activation and contribute to the effective germinal center formation, generation of high-affinity antibody-secreting plasma cells, and memory T and B cells, thereby facilitating long-term immune response. CD150 expression is upregulated after cell activation.

### Product Info

<b>Amount :</b>	100 tests
<b>Storage condition :</b>	Store in the dark at 2-8°C. Do not freeze. Avoid prolonged exposure to light.

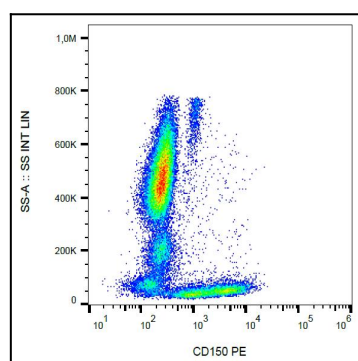


Figure 1: Surface staining of CD150 in human peripheral blood with anti-CD150 (SLAM.4) PE.