

## 30-1566: Anti-CD146 Monoclonal Antibody (Clone:P1H12)

<b>Clonality :</b>	Monoclonal
<b>Clone Name :</b>	P1H12
<b>Application :</b>	ICC/IF,IHC,FACS,WB
<b>Reactivity :</b>	Dog,Mouse,Human,Rabbit
<b>Conjugate :</b>	Unconjugated
<b>Gene :</b>	MCAM
<b>Gene ID :</b>	4162
<b>Uniprot ID :</b>	P43121
<b>Format :</b>	Purified
<b>Alternative Name :</b>	MCAM,MUC18
<b>Isotype :</b>	Mouse IgG1
<b>Immunogen Information :</b>	cultured human umbilical cells

### Description

CD146, also known as MCAM (melanoma cell adhesion molecule) or MUC18, is a heavily glycosylated transmembrane glycoprotein with more than 50% of the mass from carbohydrates. It is expressed on epithelial and endothelial cells, fibroblasts, multipotent mesenchymal stromal cells, activated T cells and activated keratinocytes, and on some cancer cells, especially melanoma. The presence of CD146 on circulating blood cells has been confined to the activated T cells rather than circulating endothelial cells. CD146 mediates heterophilic cell adhesion and regulates monocyte transendothelial migration.

### Product Info

<b>Amount :</b>	0.1 mg
<b>Purification :</b>	Purified by protein-A affinity chromatography
<b>Content :</b>	Stabilizing phosphate buffered saline (PBS), pH 7.4, 15 mM sodium azide
<b>Storage condition :</b>	Store at 2-8°C. Do not freeze.

### Application Note

Flow Cytometry Immunoprecipitation Western Blotting *Application note:* nonreducing conditions  
Immunohistochemistry Immunohistochemistry (frozen sections) Immunocytochemistry

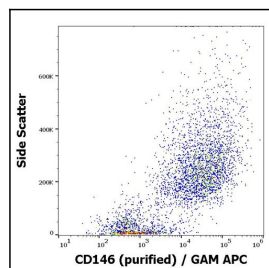


Figure 1: Flow cytometry surface staining of HUVEC cells using anti- h CD146 purified antibody