

30-1942: Anti-CD14 / LPS-receptor Monoclonal Antibody (Clone:MEM-18)-FITC Conjugated

Clonality :	Monoclonal
Clone Name :	MEM-18
Application :	FACS, IP, WB, ELISA, Functional Assay
Reactivity :	Non-Human Primates, Human
Conjugate :	FITC
Gene :	CD14
Gene ID :	929
Uniprot ID :	P08571
Alternative Name :	CD14
Isotype :	Mouse IgG1
Immunogen Information :	A crude mixture of human urinary proteins precipitated by ammonium sulphate from the urine of a patient suffering from proteinuria.

Description

CD14 is a 55 kDa GPI-anchored glycoprotein, constitutively expressed on the surface of mature monocytes, macrophages, and neutrophils, where serves as a multifunctional lipopolysaccharide receptor; it is also released to the serum both as a secreted and enzymatically cleaved GPI-anchored form. CD14 binds lipopolysaccharide molecule in a reaction catalyzed by lipopolysaccharide-binding protein (LBP), an acute phase serum protein. The soluble sCD14 is able to discriminate slight structural differences between lipopolysaccharides and is important for neutralization of serum allochthonous lipopolysaccharides by reconstituted lipoprotein particles. CD14 affects allergic, inflammatory and infectious processes.

Product Info

Amount :	100 tests
Storage condition :	Store in the dark at 2-8°C. Do not freeze. Avoid prolonged exposure to light.

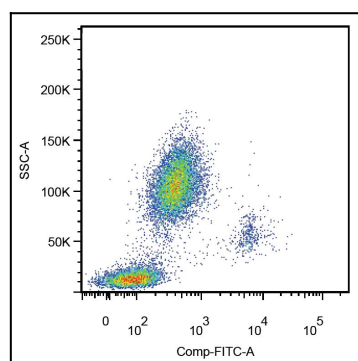


Figure 1: Surface staining of human peripheral blood leukocytes using anti-human CD14 (clone MEM-18) FITC.