

### 30-1597: Anti-CD14 / LPS-receptor Monoclonal Antibody (Clone:MEM-18)-Low Endotoxin

<b>Clonality :</b>	Monoclonal
<b>Clone Name :</b>	MEM-18
<b>Application :</b>	FACS, IP, WB, ELISA, Functional Assay
<b>Reactivity :</b>	Non-Human Primates, Human
<b>Gene :</b>	CD14
<b>Gene ID :</b>	929
<b>Uniprot ID :</b>	P08571
<b>Format :</b>	Low Endotoxin
<b>Alternative Name :</b>	CD14
<b>Isotype :</b>	Mouse IgG1
<b>Immunogen Information :</b>	A crude mixture of human urinary proteins precipitated by ammonium sulphate from the urine of a patient suffering from proteinuria.

#### Description

CD14 is a 55 kDa GPI-anchored glycoprotein, constitutively expressed on the surface of mature monocytes, macrophages, and neutrophils, where serves as a multifunctional lipopolysaccharide receptor; it is also released to the serum both as a secreted and enzymatically cleaved GPI-anchored form. CD14 binds lipopolysaccharide molecule in a reaction catalyzed by lipopolysaccharide-binding protein (LBP), an acute phase serum protein. The soluble sCD14 is able to discriminate slight structural differences between lipopolysaccharides and is important for neutralization of serum allochthonous lipopolysaccharides by reconstituted lipoprotein particles. CD14 affects allergic, inflammatory and infectious processes.

#### Product Info

<b>Amount :</b>	0.1 mg
<b>Purification :</b>	Purified by protein-A affinity chromatography
<b>Storage condition :</b>	Store at 2-8°C. Do not freeze.

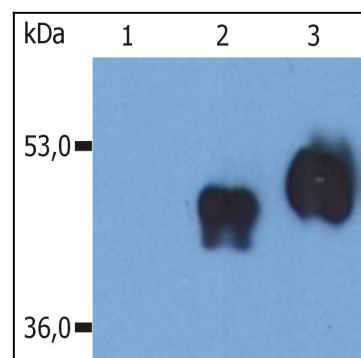


Figure 1: Western Blotting analysis (non-reducing conditions) of over-expressed human CD14 using anti-CD14 (MEM-18). Lane 1: whole cell lysate HEK 293 transfected with empty vector. . Lane 2: tissue culture supernatant collected after cultivation of HEK 293 transfected with human CD14 cDNA. . Lane 3: whole cell lysate of HEK 293 transfected with human CD14 cDNA