

30-1879: Anti-CD13 / Aminopeptidase N Monoclonal Antibody (Clone:WM15)-Biotin Conjugated

Clonality :	Monoclonal
Clone Name :	WM15
Application :	FACS, IP, IHC-Fr, Functional Assay
Reactivity :	Human, Non-Human Primates
Conjugate :	Biotin
Gene :	ANPEP
Gene ID :	290
Uniprot ID :	P15144
Alternative Name :	ANPEP,APN,CD13,PEPN
Isotype :	Mouse IgG1
Immunogen Information :	Human AML cells

Description

CD13 (aminopeptidase N, APN) is a 150 kDa type II transmembrane zinc-binding ectopeptidase expressed on various cell types. This metalloprotease preferentially catalyzes removal of neutral amino acids from small peptides, thus activating or inactivating bioactive peptides. CD13 has also role in extracellular matrix degradation, antigen processing and signal transduction, is important in inflammatory responses, regulates intercellular contact, cell motility and vascularization. CD13 is involved in protection of leukemic cells against apoptosis and its expression associated with poor prognosis of carcinomas.

Product Info

Amount :	0.1 mg
Storage condition :	Store at 2-8°C. Do not freeze.

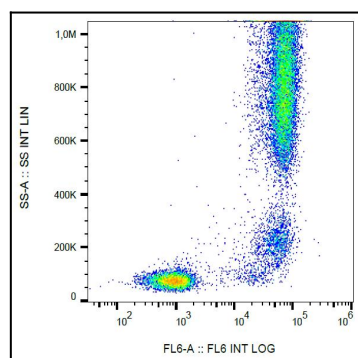


Figure 1: Surface staining of human peripheral blood leukocytes with anti-CD13 (WM15) biotin, streptavidin-APC.