

30-2152: Anti-CD122 Monoclonal Antibody (Clone:TU27)-PE Conjugated

Clonality :	Monoclonal
Clone Name :	TU27
Application :	FACS, IP, Functional Assay
Reactivity :	Human
Conjugate :	PE
Gene :	IL2RB
Gene ID :	3560
Uniprot ID :	P14784
Alternative Name :	IL2RB,IL15RB
Isotype :	Mouse IgG1
Immunogen Information :	TL-Mor cell line

Description

CD122 (IL-2/IL-15R beta) constitutes together with CD132 (common gamma chain) and with CD25 (IL-2/IL15R alpha) the intermediate (CD122+CD132) and the high affinity (CD122+CD132+CD25) IL-2 and IL-15 receptor complex. CD122 is expressed on NK cells and lymphocytes, but at low level, unless the cell is activated. The cytoplasmic part of CD122 binds to Src-family and Jak-family kinases. The biological effect of CD122 ligation depends on whether IL-2 or IL-15 is bound to the receptor complex.

Product Info

Amount :	100 tests
Storage condition :	Store in the dark at 2-8°C. Do not freeze. Avoid prolonged exposure to light.

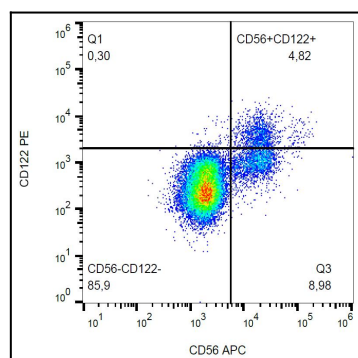


Figure 1: Surface staining of human peripheral blood with anti-human CD122 (TU27) PE.