

## 30-2255: Anti-CD11c Monoclonal Antibody (Clone:BU15)-PE Conjugated

<b>Clonality :</b>	Monoclonal
<b>Clone Name :</b>	BU15
<b>Application :</b>	FACS, IP, IHC-Fr
<b>Reactivity :</b>	Human, Monkey
<b>Conjugate :</b>	PE
<b>Gene :</b>	ITGAX
<b>Gene ID :</b>	3687
<b>Uniprot ID :</b>	P20702
<b>Alternative Name :</b>	ITGAX,CD11C
<b>Isotype :</b>	Mouse IgG1
<b>Immunogen Information :</b>	Dendritic cells of synovial fluid

### Description

CD11c (p150, alphaX integrin subunit) forms complex with CD18 (beta2 integrin subunit) and is expressed mainly on tissue macrophages and dendritic cells. CD11c binds to complement fragment iC3b, fibrinogen, VCAM-1 and ICAM-2 or e.g. CD90. Like other beta2 integrins, CD11c/CD18 plays roles in cell migration and phagocytosis. Moreover, interaction of CD11c/CD18 with plasminogen regulates plasmin activities, and interaction with heparin counteracts binding of iC3b.

### Product Info

<b>Amount :</b>	100 tests
<b>Storage condition :</b>	Store in the dark at 2-8°C. Do not freeze. Avoid prolonged exposure to light.

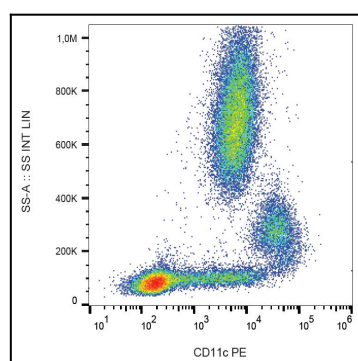


Figure 1: Surface staining of human peripheral blood cells with anti-CD11c (BU15) PE.