

## 30-2092: Anti-CD11b Monoclonal Antibody (Clone:ICRF44)-FITC Conjugated

<b>Clonality :</b>	Monoclonal
<b>Clone Name :</b>	ICRF44
<b>Application :</b>	FACS, IP, IHC-Fr, ICC, Functional Assay
<b>Reactivity :</b>	Human, Non-Human Primates
<b>Conjugate :</b>	FITC
<b>Gene :</b>	ITGAM
<b>Gene ID :</b>	3684
<b>Uniprot ID :</b>	P11215
<b>Alternative Name :</b>	ITGAM,CD11B,CR3A
<b>Isotype :</b>	Mouse IgG1
<b>Immunogen Information :</b>	Rheumatoid synovial cells and human monocytes.

### Description

CD11b (integrin alphaM subunit) is a 165-170 kDa type I transmembrane glycoprotein that non-covalently associates with integrin beta2 subunit (CD18); expression of the CD11b chain on the cell surface requires the presence of the CD18 antigen. CD11b/CD18 integrin (Mac-1, CR3) is highly expressed on NK cells, neutrophils, monocytes and less on macrophages. CD11b/CD18 integrin is implicated in various adhesive interactions of monocytes, macrophages and granulocytes, facilitating their diapedesis, as well as it mediates the uptake of complement coated particles, serving as a receptor for the iC3b fragment of the third complement component.

### Product Info

<b>Amount :</b>	100 tests
<b>Storage condition :</b>	Store in the dark at 2-8°C. Do not freeze. Avoid prolonged exposure to light.

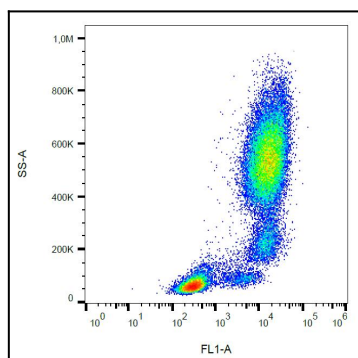


Figure 1: Surface staining of human peripheral blood with anti-CD11b (ICRF44) FITC.