

30-1940: Anti-CD11a / LFA-1 alpha chain Monoclonal Antibody (Clone:MEM-25)-FITC Conjugated

Clonality :	Monoclonal
Clone Name :	MEM-25
Application :	FACS, IP, Functional Assay
Reactivity :	Human
Conjugate :	FITC
Gene :	ITGAL
Gene ID :	3683
Uniprot ID :	P20701
Alternative Name :	ITGAL,CD11A
Isotype :	Mouse IgG1
Immunogen Information :	Leukocytes from a patient suffering from a LGL-type leukaemia.

Description

CD11a (LFA-1 alpha) together with CD18 constitute leukocyte function-associated antigen 1 (LFA-1), the alphaLbeta2 integrin. CD11a is implicated in activation of LFA-1 complex. LFA-1 is expressed on the plasma membrane of leukocytes in a low-affinity conformation. Cell stimulation by chemokines or other signals leads to induction the high-affinity conformation, which supports tight binding of LFA-1 to its ligands, the intercellular adhesion molecules ICAM-1, -2, -3. LFA-1 is thus involved in interaction of various immune cells and in their tissue-specific settlement, but participates also in control of cell differentiation and proliferation and of T-cell effector functions. Blocking of LFA-1 function by specific antibodies or small molecules has become an important therapeutic approach in treatment of multiple inflammatory diseases. For example, humanized anti-LFA-1 antibody Efalizumab (Raptiva) is being used to interfere with T cell migration to sites of inflammation; binding of cholesterol-lowering drug simvastatin to CD11a allosteric site leads to immunomodulation and increase in lymphocytic cholinergic activity.

Product Info

Amount :	100 tests
Storage condition :	Store in the dark at 2-8°C. Do not freeze. Avoid prolonged exposure to light.

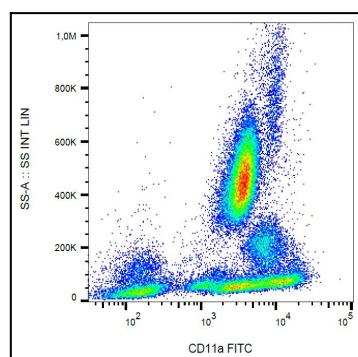


Figure 1: Surface staining of human peripheral blood cells with anti-human CD11a (MEM-25) FITC.