

30-1549: Anti-CD116 Monoclonal Antibody (Clone:4H1)

Clonality :	Monoclonal
Clone Name :	4H1
Application :	FACS
Reactivity :	Human
Gene :	CSF2RA
Gene ID :	1438
Uniprot ID :	P15509
Format :	Purified
Alternative Name :	CSF2RA,CSF2R,CSF2RY
Isotype :	Mouse IgG1
Immunogen Information :	CD116-transfected COS cells

Description

CD116 (GM-CSF R alpha) is the low affinity receptor for granulocyte-macrophage colony-stimulating factor (GM-CSF). CD116 heterodimerizes with CD131, the common beta chain subunit shared with IL-3 and IL5 receptors, to form the high affinity GM-CSF receptor. CD116 is expressed by myeloid cells including macrophages, neutrophils, eosinophils, dendritic cells, and their precursors, as well as on endothelial cells. It is being used as a specific marker of myeloid leukemias.

Product Info

Amount :	0.1 mg
Purification :	Purified by protein-A affinity chromatography
Storage condition :	Store at 2-8°C. Do not freeze.

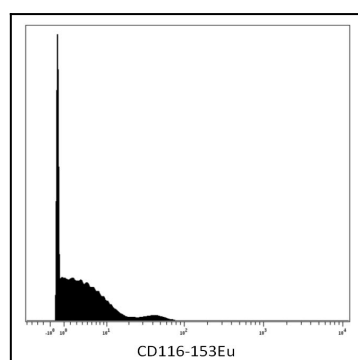


Figure 1: Surface staining (mass cytometry) of human peripheral blood with anti-CD116 (4H1) 153Eu. Gated on singlets.