

## 30-2391: PE Conjugated, Anti-CD111 / Nectin-1 Monoclonal Antibody (Clone:R1.302)

<b>Clonality :</b>	Monoclonal
<b>Clone Name :</b>	R1.302
<b>Application :</b>	FACS
<b>Reactivity :</b>	Human
<b>Conjugate :</b>	PE
<b>Gene :</b>	NECTIN1
<b>Gene ID :</b>	5818
<b>Uniprot ID :</b>	Q15223
<b>Alternative Name :</b>	NECTIN1,HVEC,PRR1,PVRL1
<b>Isotype :</b>	Mouse IgG1
<b>Immunogen Information :</b>	NIH/3T3 cells transfected with human CD111

### Description

CD111, also known as nectin-1, is a calcium-independent cell-cell adhesion transmembrane glycoprotein involved in organization of adherens junctions and tight junctions in epithelial and endothelial cells. It also serves as a target molecule for entry of herpes simplex virus (HSV-1, HSV-2) and pseudorabies virus (PRV) into epithelial and neuronal cells. CD111 is connected with actin cytoskeleton through afadin. Mutations in the gene for CD111 cause cleft lip and palate/ectodermal dysplasia 1 syndrome (CLPED1) as well as non-syndromic cleft lip with or without cleft palate (CL/P). Alternative splicing results in multiple transcript variants encoding proteins with distinct C-termini.

### Product Info

<b>Amount :</b>	100 tests
<b>Storage condition :</b>	Store in the dark at 2-8°C. Do not freeze. Avoid prolonged exposure to light.

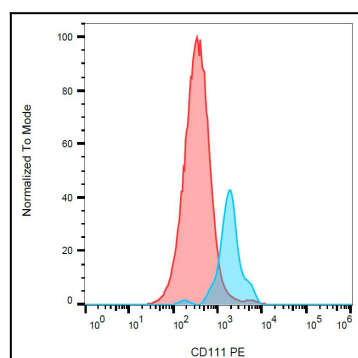


Figure 1: Surface staining of human peripheral blood with anti-human CD111 (R1.302) PE.