

## 30-1794: APC Conjugated, Anti-CD107a / LAMP-1 Monoclonal Antibody (Clone:H4A3)

<b>Clonality :</b>	Monoclonal
<b>Clone Name :</b>	H4A3
<b>Application :</b>	FACS
<b>Reactivity :</b>	Human
<b>Conjugate :</b>	APC
<b>Gene :</b>	LAMP1
<b>Gene ID :</b>	3916
<b>Uniprot ID :</b>	P11279
<b>Alternative Name :</b>	LAMP1
<b>Isotype :</b>	Mouse IgG1
<b>Immunogen Information :</b>	Human PBMC

### Description

CD107a (lysosome-associated membrane protein-1, LAMP-1), together with LAMP-2, is a major constituent of lysosomal membrane, 1-2% of total CD107a is found also on the plasma membrane. The LAMP proteins are involved in lysosome biogenesis and are required for fusion of lysosomes with phagosomes. Increased CD107a immunoreactivity is observed in neurones, and in glial cells surrounding senile plaques in Alzheimers disease cases and is localized mainly in medullary epithelial cells, single macrophages and lymphocytes in acute thymic involution. CD107a is a good marker of mast cell activation.

### Product Info

<b>Amount :</b>	100 tests
<b>Storage condition :</b>	Store in the dark at 2-8°C. Do not freeze. Avoid prolonged exposure to light.

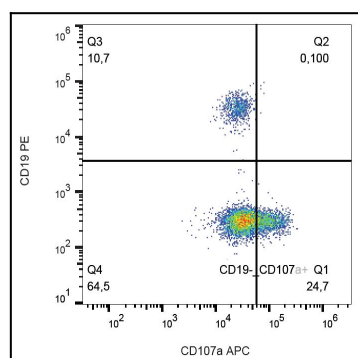


Figure 1: Intracellular staining of human peripheral blood cells with anti-CD107a (H4A3) APC.