

30-2285: PE Conjugated, Anti-CD106 / VCAM-1 Monoclonal Antibody (Clone:STA)

Clonality :	Monoclonal
Clone Name :	STA
Application :	FACS
Reactivity :	Human
Conjugate :	PE
Gene :	VCAM1
Gene ID :	7412
Uniprot ID :	P19320
Alternative Name :	VCAM1
Isotype :	Mouse IgG1
Immunogen Information :	Human DS6 T cell line

Description

CD106 / VCAM-1 (vascular cell adhesion molecule-1) is an Ig-like cell surface adhesion molecule binding VLA-4 integrin. VCAM-1 is a potent T cell costimulatory molecule taking part in their positive selection and survival, as well as in adhesion, transendothelial migration and activation of peripheral T cells. VCAM-1 is also involved in endothelial cell-cell contacts. Whereas VCAM-1 normally mediates leukocyte extravasion to sites of tissue inflammation, tumour cells can use overexpressed VCAM-1 to escape T cell immunity. Soluble form of VCAM-1 (sVCAM-1) is an inflammatory marker and can be used also in prognosis of subsequent cariovascular events following acute coronary syndromes.

Product Info

Amount :	100 tests
Storage condition :	Store in the dark at 2-8°C. Do not freeze. Avoid prolonged exposure to light.

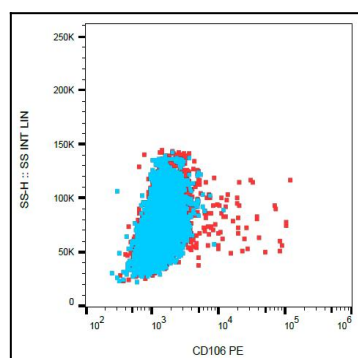


Figure 1: Surface staining of TNF alpha-stimulated HUVEC cells with anti-CD106 (STA) PE.