

## 30-2084: FITC Conjugated, Anti-CD103 / Integrin alpha E Monoclonal Antibody (Clone:Ber-ACT8)

<b>Clonality :</b>	Monoclonal
<b>Clone Name :</b>	Ber-ACT8
<b>Application :</b>	FACS
<b>Reactivity :</b>	Human
<b>Conjugate :</b>	FITC
<b>Gene :</b>	ITGAE
<b>Gene ID :</b>	3682
<b>Uniprot ID :</b>	P38570
<b>Alternative Name :</b>	ITGAE
<b>Isotype :</b>	Mouse IgG1
<b>Immunogen Information :</b>	HTLV-1 induced human T cell line MAPS16

### Description

CD103 / Integrin alphaE is an integrin subunit that is expressed on intraepithelial lymphocytes, epithelial dendritic cells, lamina propria-derived dendritic cells, a subpopulation of lamina propria T cells, a small subset of peripheral lymphocytes, namely T reg cells, and on activated and TGF-beta stimulated lymphocytes. CD103 is in mature form cleaved into two disulfide-linked chains (C-terminal 150 kDa chain and N-terminal 25 kDa chain). It heterodimerizes with integrin beta7 subunit to form alphaE/beta7 integrin (mucosal lymphocyte 1 antigen), which through binding E-cadherin mediates homing of lymphocytes to the intestinal epithelium, and, in addition to the role in adhesion, may serve as an accessory molecule for intraepithelial lymphocyte activation.

### Product Info

<b>Amount :</b>	100 tests
<b>Storage condition :</b>	Store in the dark at 2-8°C. Do not freeze. Avoid prolonged exposure to light.

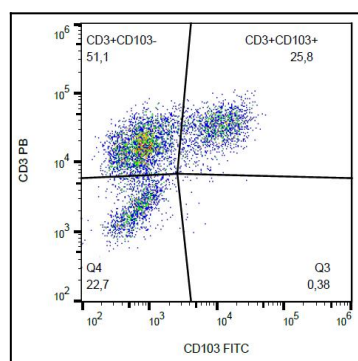


Figure 1: Surface staining of CD103 on PHA-activated PBMC with anti-CD103 (Ber-ACT8) FITC.