

30-2124: PE Conjugated, Anti-CD102 / ICAM-2 Monoclonal Antibody (Clone:CBR-IC2/2)

Clonality :	Monoclonal
Clone Name :	CBR-IC2/2
Application :	FACS
Reactivity :	Human
Conjugate :	PE
Gene :	ICAM2
Gene ID :	3384
Uniprot ID :	P13598
Alternative Name :	ICAM2
Isotype :	Mouse IgG2a
Immunogen Information :	Human CD102 cDNA transfected COS cells

Description

CD102 / ICAM-2 (intracellular cell adhesion molecule-2), a counter receptor of LFA-1 (CD11a/CD18), is a transmembrane glycoprotein with two extracellular IgC-like domains and intracellular C-terminal tail. It is involved in lymphocyte recirculation and homing to the sites of inflammation. Through interaction with integrins it provides to the immune cells costimulatory signals. Expression of CD102 on blood cells (lymphocytes, monocytes, thrombocytes) is lower than on endothelium and follicular dendritic cells. CD102 levels are upregulated in lymph nodes with malignant infiltration.

Product Info

Amount :	100 tests
Purification :	Purified antibody is conjugated with R-phycoerythrin (PE) under optimum conditions. Unconjugated antibody and free fluorochrome are removed by size-exclusion chromatography.
Content :	Stabilizing phosphate buffered saline (PBS), pH 7.4, 15 mM sodium azide
Storage condition :	Store in the dark at 2-8°C. Do not freeze. Avoid prolonged exposure to light.

Application Note

Flow cytometry: The reagent is designed for analysis of human blood cells using 10 µl reagent / 100 µl of whole blood or 10⁶ cells in a suspension. The content of a vial (1 ml) is sufficient for 100 tests.

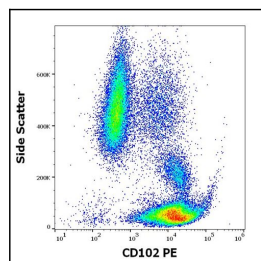


Figure 1: Flow cytometry surface staining pattern of human peripheral whole blood stained using anti-human CD102 PE antibody