

## 30-2390: PE Conjugated, Anti-CD101 Monoclonal Antibody (Clone:BB27)

<b>Clonality :</b>	Monoclonal
<b>Clone Name :</b>	BB27
<b>Application :</b>	FACS
<b>Reactivity :</b>	Human
<b>Conjugate :</b>	PE
<b>Gene :</b>	CD101
<b>Gene ID :</b>	9398
<b>Uniprot ID :</b>	Q93033
<b>Alternative Name :</b>	CD101,EWI101,IGSF2,V7
<b>Isotype :</b>	Mouse IgG1
<b>Immunogen Information :</b>	Human thymic clone B12

### Description

CD101 is a type I transmembrane glycoprotein, which forms disulfide-linked homodimers. It is expressed on activated T cells, as well as on granulocytes, monocytes, dendritic cells or mucosal T cells. It plays a major role in the activation of T cells by skin dendritic cells. Function of CD101 has not been fully elucidated, but in mice its knock-out results in liver autoimmune disease induced by *Novosphingobium aromaticivorans*.

### Product Info

<b>Amount :</b>	100 tests
<b>Storage condition :</b>	Store in the dark at 2-8°C. Do not freeze. Avoid prolonged exposure to light.

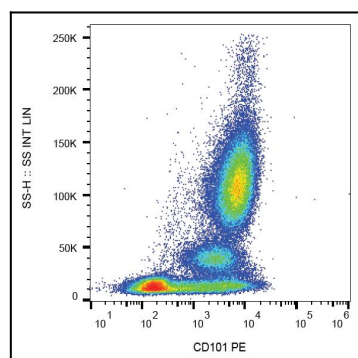


Figure 1: Surface staining of human peripheral blood with anti-CD101 (BB27) PE.