

## 30-2000: FITC Conjugated, Anti-CD10 / CALLA Monoclonal Antibody (Clone:LT10)

<b>Clonality :</b>	Monoclonal
<b>Clone Name :</b>	LT10
<b>Application :</b>	FACS
<b>Reactivity :</b>	Human
<b>Conjugate :</b>	FITC
<b>Gene :</b>	MME
<b>Gene ID :</b>	4311
<b>Uniprot ID :</b>	P08473
<b>Alternative Name :</b>	MME,EPN
<b>Isotype :</b>	Mouse IgG1
<b>Immunogen Information :</b>	mouse NALM-6 leukemia pre-B cell line (tissue/cell preparation)

### Description

CD10 (neutral endopeptidase - NEP, common acute lymphocytic leukemia antigen - CALLA, membrane metallo-endopeptidase - MME, enkephalinase) is a 100-kDa cell surface zinc metalloprotease cleaving peptide bonds on the N-terminus of hydrophobic amino acids and inactivating multiple physiologically active peptides. CD10 is expressed on various normal cell types, including lymphoid precursor cells, germinal center B lymphocytes, and some epithelial cells, and its expression level serves as a marker for diagnostics of many carcinomas. CD10 is also a differentiation antigen for early B-lymphoid progenitors in the B-cell differentiation pathway and has a key role in regulation of growth, differentiation and signal transduction of many cellular systems.

### Product Info

<b>Amount :</b>	100 tests
<b>Storage condition :</b>	Store in the dark at 2-8°C. Do not freeze. Avoid prolonged exposure to light.

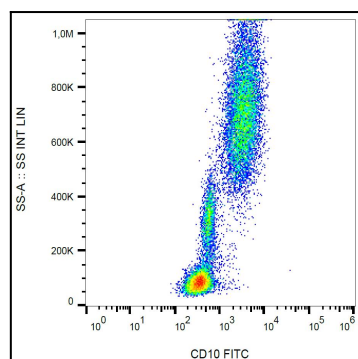


Figure 1: Surface staining of human peripheral blood cells with anti-CD10 (LT10) FITC.