

30-1962: FITC Conjugated, Anti-beta2-Microglobulin Monoclonal Antibody (Clone:B2M-01)

Clonality :	Monoclonal
Clone Name :	B2M-01
Application :	FACS
Reactivity :	Human
Conjugate :	FITC
Gene :	B2M
Gene ID :	567
Uniprot ID :	P61769
Alternative Name :	B2M,CDABP0092,HDCMA22P
Isotype :	Mouse IgG2a
Immunogen Information :	Purified human beta2-microglobulin

Description

Beta2-microglobulin non-covalently associates with the 44 kDa alpha chain to form the HLA Class I antigen complex. Human beta2-microglobulin associated with HLA Class I antigens is expressed on many types of cells including lymphocytes, thymocytes, monocytes, granulocytes, platelets, endothelial cells, and epithelial cells. It is absent on erythrocytes.

Product Info

Amount :	0.1 mg
Storage condition :	Store in the dark at 2-8°C. Do not freeze. Avoid prolonged exposure to light.

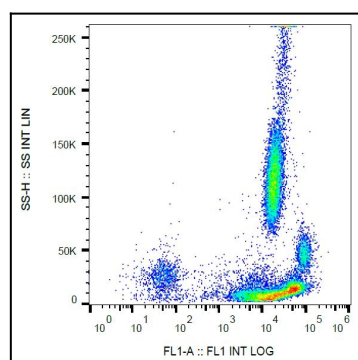


Figure 1: Surface staining of beta2-microglobulin in human peripheral blood with anti-beta2-microglobulin (B2M-01) FITC.