

30-1141: Anti-beta2-Microglobulin Monoclonal Antibody (Clone:B2M-01)

Clonality :	Monoclonal
Clone Name :	B2M-01
Application :	FACS
Reactivity :	Human
Gene :	B2M
Gene ID :	567
Uniprot ID :	P61769
Format :	Purified
Alternative Name :	B2M,CDABP0092,HDCMA22P
Isotype :	Mouse IgG2a
Immunogen Information :	Purified human beta2-microglobulin

Description

Beta2-microglobulin non-covalently associates with the 44 kDa alpha chain to form the HLA Class I antigen complex. Human beta2-microglobulin associated with HLA Class I antigens is expressed on many types of cells including lymphocytes, thymocytes, monocytes, granulocytes, platelets, endothelial cells, and epithelial cells. It is absent on erythrocytes.

Product Info

Amount :	0.1 mg
Purification :	Purified by precipitation methods
Storage condition :	Store at 2-8°C. Do not freeze.

Application Note

Western blotting: Recommended dilution: 2-4 µg/ml; positive control: U937 human histiocytic lymphoma cell line, RAJI human Burkitt lymphoma cell line, negative control: EL4 mouse lymphoblastic lymphoma cell line; both reducing and non-reducing conditions.
Immunohistochemistry (paraffin sections): Recommended dilution: 10 µg/ml; positive tissue: kidney glomeruli.
Flow cytometry: Recommended dilution: 0.5-4 µg/ml; positive control: peripheral blood lymphocytes, negative control: DAUDI human Burkitt lymphoma cell line, erythrocytes.
ELISA: Working dilution should be determined by investigator.
RIA: Use at an assay dependent concentration. The dissociation constant of the antibody soluble beta2-microglobulin is 1.5×10^{-8} mol/l as determined by competitive RIA.
Immunoprecipitation: The antibody B2M-01 coprecipitates beta2-microglobulin (12 kDa) and HLA antigens (45 kDa) from the lysates of human lymphoid cells.

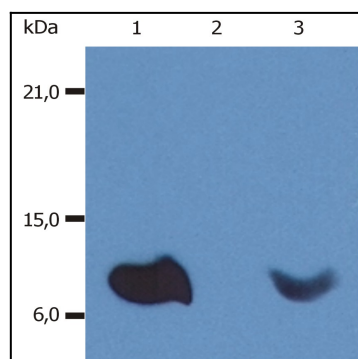


Fig. 1: Western Blotting analysis (non-reducing conditions) of whole cell lysate of various cell lines using anti-human beta2-microglobulin (B2M-01). Lane 1: RAJI human Burkitt lymphoma cell line. Lane 2: EL4 mouse lymphoblastic lymphoma cell line. Lane 3: U937 human histiocytic lymphoma cell line