

### 30-1151: Anti-beta Endorphin Monoclonal Antibody (Clone:B31.15)

<b>Clonality :</b>	Monoclonal
<b>Clone Name :</b>	B31.15
<b>Application :</b>	IHC
<b>Reactivity :</b>	Human
<b>Format :</b>	Purified
<b>Isotype :</b>	Mouse IgG1
<b>Immunogen Information :</b>	Human beta Endorphin (full length native protein).

#### Product Info

<b>Amount :</b>	0.1 mg
<b>Purification :</b>	Purified by protein-A affinity chromatography
<b>Storage condition :</b>	Store at 2-8°C. Do not freeze.

#### Application Note

**Immunohistochemistry** *Recommended dilution:* 10 - 20 µg/ml

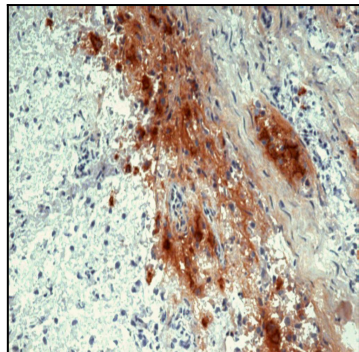


Figure 1: Immunohistochemistry staining of human pituitary gland (frozen sections) with anti-human beta Endorphin (B31.15).