

30-2320: Anti-Bcl2 Monoclonal Antibody (Clone:Bcl-2/100)-PE Conjugated

Clonality :	Monoclonal
Clone Name :	Bcl-2/100
Application :	FACS, IP, WB, IHC, IHC-Fr, ICC
Reactivity :	Human
Conjugate :	PE
Gene :	BCL2
Gene ID :	596
Uniprot ID :	P10415
Alternative Name :	Apoptosis regulator Bcl-2
Isotype :	Mouse IgG1
Immunogen Information :	Synthetic peptide corresponding to the amino acids 41-54 of human Bcl2

Description

Bcl2 (B cell CLL lymphoma 2) is a proto-oncogen, which can contribute to tumorigenesis by counteracting apoptosis in various cell types. The anti-apoptotic effect of Bcl2 is performed by its interactions with suppressors and agonists of cell death and under physiological conditions it is regulated by proteolytic processing and phosphorylation. Bcl2 expression can be detected mainly in lymphoid tissues and in the basal cells of epithelial tissues. It is also a marker that can help in classification of lymphoproliferative diseases and in prognostics of some epithelial neoplasms.

Product Info

Amount :	100 tests
Storage condition :	Store in the dark at 2-8°C. Do not freeze. Avoid prolonged exposure to light.

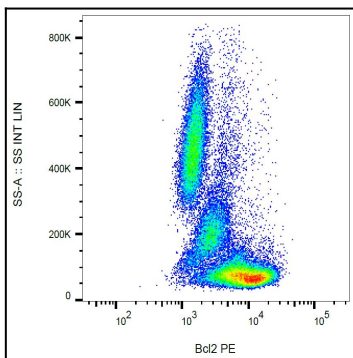


Figure 1: Intracellular staining of human peripheral blood with anti-Bcl2 (Bcl-2/100) PE.