

### 30-1158: Anti-Albumin Monoclonal Antibody (Clone:AL-01)

<b>Clonality :</b>	Monoclonal
<b>Clone Name :</b>	AL-01
<b>Application :</b>	IHC, ELISA, RIA, WB
<b>Reactivity :</b>	Human
<b>Gene :</b>	ALB
<b>Gene ID :</b>	213
<b>Uniprot ID :</b>	P02768
<b>Format :</b>	Purified
<b>Alternative Name :</b>	ALB,GIG20,GIG42,PRO0903,PRO1708,PRO2044,PRO2619,PRO2675,UNQ696/PRO1341
<b>Isotype :</b>	Mouse IgG1
<b>Immunogen Information :</b>	Fraction of proteins containing albumin after ammonium sulphate precipitation and DEAE-chromatography of human serum.

#### Description

Human serum albumin (65-67 kDa) is the most abundant protein in human blood plasma (produced in the liver). It has a serum half-life of approximately 20 days.

#### Product Info

<b>Amount :</b>	0.1 mg
<b>Purification :</b>	Purified by precipitation and chromatography
<b>Storage condition :</b>	Store at 2-8°C. Do not freeze.

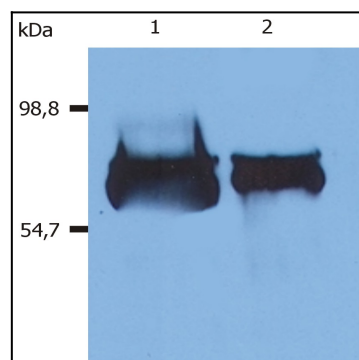


Figure 1: Western Blotting analysis (reducing conditions) of human serum albumin using anti-human Albumin (AL-01). Lane 1: Human blood plasma Lane 2: Human blood serum