

30-1421: Anti-Actin Monoclonal Antibody (Clone:HHF35)

Clonality :	Monoclonal
Clone Name :	HHF35
Application :	WB
Reactivity :	Human
Gene :	ACTA1
Gene ID :	58
Uniprot ID :	P68133
Format :	Purified
Alternative Name :	Alpha-actin-1, ACTA
Isotype :	Mouse IgG1
Immunogen Information :	SDS extracted protein fraction of human myocardium

Description

Actin is a highly conserved ubiquitous globular protein (G-actin) that polymerizes to form fibrous F-actin microfilaments. In higher eucaryotes several actin isoforms have been identified, that fall into three classes. Alpha actin is a structural component of the contractile apparatus of muscle cells or muscle-derived cells. Beta actin and gamma actin play roles in regulation of cell motility in other cell types. Specific subcellular structures such as as stress fibers, focal adhesions, filopodia etc., are formed by involvement of actin cytoskeleton.

Product Info

Amount :	0.1 mg
Purification :	Purified by protein-A affinity chromatography
Storage condition :	Store at 2-8°C. Do not freeze.

Application Note

Western Blotting *Recommended dilution:* 1 µg/ml
Positive control: murine femoral muscle, murine heart
Negative control: HUVEC line

Immunohistochemistry

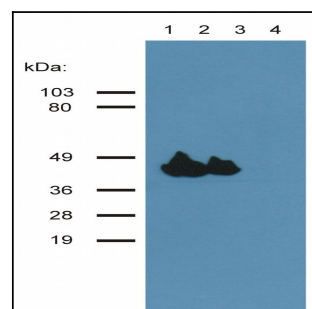


Figure 1: Western blotting analysis of muscle-specific actin using the monoclonal antibody HHF35. Lane 1: murine femoral muscle. Lane 2: murine heart. Lane 3: HeLa. Lane 4: HUVEC

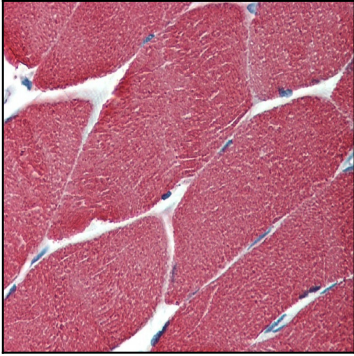


Figure 2: Immunohistochemistry staining of human muscle (paraffin-embedded sections) with anti-muscle-specific actin (HHF35).