

30-1177: Anti-5-bromodeoxyuridine (BrdU) Monoclonal Antibody (Clone:MoBu-1)

Clonality :	Monoclonal
Clone Name :	MoBu-1
Application :	IHC
Format :	Purified
Isotype :	Mouse IgG1
Immunogen Information :	5-bromodeoxyuridine conjugated with hemocyanine.

Description

Bromodeoxyuridine (BrdU) is a thymidine analog which is selectively incorporated into the DNA of proliferating cells to provide a marker for the DNA being replicated. The number of proliferating cells can then be detected in cell lysates, tissue sections or suspensions using an antibody specific for the BrdU.

Product Info

Amount :	0.1 mg
Purification :	Purified by protein-A affinity chromatography
Content :	1 mg/ml; Phosphate buffered saline (PBS) with 15 mM sodium azide, approx. pH 7.4
Storage condition :	Store at 2-8°C. Do not freeze.

Application Note

Immunohistochemistry *Application note:* excellent

Flow Cytometry *Recommended dilution:* 1-2 µg/ml

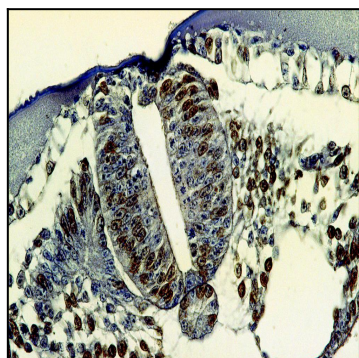


Figure 1: Immunohistochemistry staining of bromodeoxyuridine-labeled cells (chick embryo; paraffin-embedded sections) with anti-5-bromodeoxyuridine (MoBu-1).

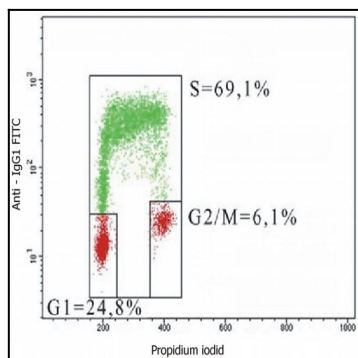


Figure 2: Flow cytometry analysis of 5-bromodeoxyuridin (BrdU) incorporation in CEM human acute lymphoblastic leukemia cell line using purified anti-5-bromodeoxyuridin (MoBu-1) (detection by Goat anti-mouse IgG1 FITC). The individual cell cycle phases (S-, G1-, G2/M-phase) are indicated in the figure.