

44-1086: Anti-Tau Monoclonal Antibody (Clone:IHC696)-Ready to Use(Discontinued)

Clonality :	Monoclonal
Clone Name :	IHC696
Application :	IHC
Reactivity :	Human
Gene :	MAPT
Gene ID :	4137
Uniprot ID :	P10636
Alternative Name :	MAPT,MAPTL,MTBT1,TAU
Isotype :	Mouse IgG1
Immunogen Information :	Human Recombinant Tau (Longest Brain Isoform 441 aa)

Description

"Tau proteins are abundant in neurons of the central nervous system, and function in microtubule stability and organization. Defects in Tau functioning and aggregation of these proteins have been clinically linked to a number of neurodegenerative disorders including Alzheimer's disease, Parkinson's disease, Pick's disease (PiD), progressive supranuclear palsy (PSP), cortical basal degeneration (CBD), and frontotemporal dementia with parkinsonism linked to chromosome 17 (FTDP-17)."

Product Info

Amount :	7 ml
Purification :	Protein A/G Chromatography
Content :	Tris Buffer, pH 7.3 - 7.7, with 1% BSA and <0.1% Sodium Azide
Storage condition :	Store at 2°C - 8°C. Do not freeze.

Application Note

This product is available in ready to use format, hence no dilution is required.

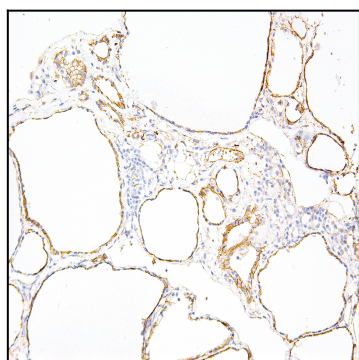


Figure 1: Immunohistochemical analysis of Tau (Clone: IHC696) on Thyroid Gland