

## 44-1078: Anti-Podoplanin Monoclonal Antibody (Clone:IHC650)

<b>Clonality :</b>	Monoclonal
<b>Clone Name :</b>	IHC650
<b>Application :</b>	IHC
<b>Reactivity :</b>	Human
<b>Gene :</b>	PDPN
<b>Gene ID :</b>	10630
<b>Uniprot ID :</b>	Q86YL7
<b>Format :</b>	Purified
<b>Alternative Name :</b>	PDPN,GP36,PSEC0003,PSEC0025
<b>Isotype :</b>	Mouse IgG2a, kappa
<b>Immunogen Information :</b>	Recombinant Human Podoplanin

### Description

Podoplanin is a transmembrane mucoprotein specifically expressed in the endothelium of lymphatic capillaries, while remaining absent from the blood vasculature. The protein is co-localized with VEGFR3/FLT4 in normal skin and kidney. Anti-Podoplanin is useful in the identification of lymphangiomas, Kaposi's sarcomas, epithelioid mesotheliomas, hemangioblastomas, seminomas, and some angiosarcomas which likely have lymphatic differentiation.

### Product Info

<b>Amount :</b>	0.1 ml / 0.5 ml
<b>Purification :</b>	Protein A/G Chromatography
<b>Content :</b>	Tris Buffer, pH 7.3 - 7.7, with 1% BSA and <0.1% Sodium Azide
<b>Storage condition :</b>	Store at 2°C - 8°C. Do not freeze.

### Application Note

Recommended dilutions: Immunohistochemical analysis: 1:100 - 1:200. However, this need to be optimized based on the research applications.

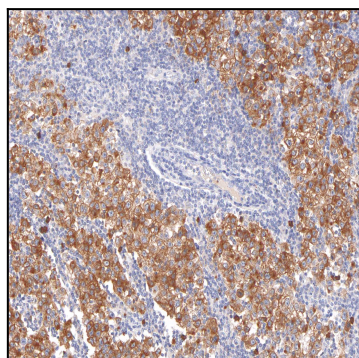


Figure 1: Immunohistochemical analysis of Podoplanin (Clone: IHC650) on Testicular Cancer