

44-1071: Anti-PMS2 Monoclonal Antibody (Clone:IHC412)(Discontinued)

Clonality :	Monoclonal
Clone Name :	IHC412
Application :	IHC
Reactivity :	Human
Gene :	PMS2
Gene ID :	5395
Uniprot ID :	P54278
Format :	Purified
Alternative Name :	PMS2,PMSL2
Isotype :	Mouse IgG1
Immunogen Information :	Recombinant Human PMS2

Description

Postmeiotic Segregation Increased 2 (PMS2) is a DNA repair protein involved in mismatch repair. Mutations and deficiencies in the PMS2 gene have been linked to microsatellite instability, and malignancies such as hereditary nonpolyposis colorectal cancer and endometrial cancer. Anti-PMS2 is recommended to be used as part of a panel along with antibodies against MLH1, MSH2, and MSH6.

Product Info

Amount :	0.1 ml / 0.5 ml
Purification :	Protein A/G Chromatography
Content :	Tris Buffer, pH 7.3 - 7.7, with 1% BSA and <0.1% Sodium Azide
Storage condition :	Store at 2°C - 8°C. Do not freeze.

Application Note

Recommended dilutions: Immunohistochemical analysis: 1:100 - 1:200. However, this need to be optimized based on the research applications.

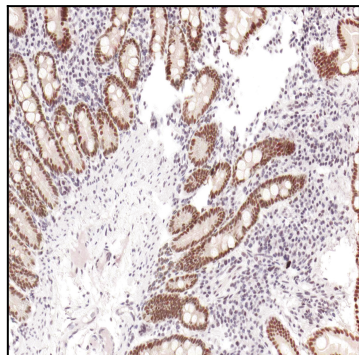


Figure 1: Immunohistochemical analysis of PMS2 (Clone: IHC412) on Duodenum