

44-1047: Anti-MSH6 Monoclonal Antibody (Clone:IHC006)(Discontinued)

Clonality :	Monoclonal
Clone Name :	IHC006
Application :	IHC
Reactivity :	Human
Gene :	MSH6
Gene ID :	2956
Uniprot ID :	P52701
Format :	Purified
Alternative Name :	MSH6,GTBP
Isotype :	Mouse IgG1
Immunogen Information :	Recombinant Human MSH6

Description

MutS Homolog 6 (MSH6) is a protein involved in the mismatch-repair pathway. This protein is commonly associated with hereditary non-polyposis colorectal cancer, and mutations in this gene are correlated with the development of sporadic colorectal carcinoma. Studies have shown that mutations in MSH6, when co-indicated with mutations in MSH1 and MSH2, contribute to the development of sporadic colorectal carcinoma. Use of Anti-MSH6 is optimized when paired in an IHC panel with MSH2, MLH1, and PMS2.

Product Info

Amount :	0.1 ml / 0.5 ml
Purification :	Protein A/G Chromatography
Content :	Tris Buffer, pH 7.3 - 7.7, with 1% BSA and <0.1% Sodium Azide
Storage condition :	Store at 2°C - 8°C. Do not freeze.

Application Note

Recommended dilutions: Immunohistochemical analysis: 1:100 - 1:200. However, this need to be optimized based on the research applications.

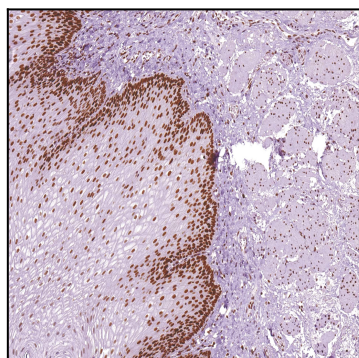


Figure 1: Immunohistochemical analysis of MSH6 (Clone: IHC006) on Esophagus