

44-1044: Anti-MSH2 Monoclonal Antibody (Clone:IHC410)(Discontinued)

Clonality :	Monoclonal
Clone Name :	IHC410
Application :	IHC
Reactivity :	Human
Gene :	MSH2
Gene ID :	4436
Uniprot ID :	P43246
Format :	Purified
Isotype :	Mouse IgG2b
Immunogen Information :	Recombinant Human MSH2

Description

"MutS Homolog 2 (MSH2) is a protein involved in the mismatch-repair pathway. This protein is commonly associated with hereditary non-polyposis colorectal cancer, and mutations in this gene are correlated with the development of sporadic colorectal carcinoma. Expression levels of MSH2 are abnormally low in a high percentage of patients with microsatellite instability, as well as endometrial and ovarian cancers. Use of Anti-MSH2 is optimized when paired in an IHC panel with antibodies against MSH6, MLH1, and PMS2. Reports have shown Anti-MSH2 to be useful in the detection of the protein in a number of normal and neoplastic tissues, and for identifying a loss of MSH2 in tumors that are microsatellite-unstable."

Product Info

Amount :	0.1 ml / 0.5 ml
Purification :	Protein A/G Chromatography
Content :	Tris Buffer, pH 7.3 - 7.7, with 1% BSA and <0.1% Sodium Azide
Storage condition :	Store at 2°C - 8°C. Do not freeze.

Application Note

Recommended dilutions: Immunohistochemical analysis: 1:100 - 1:200. However, this need to be optimized based on the research applications.

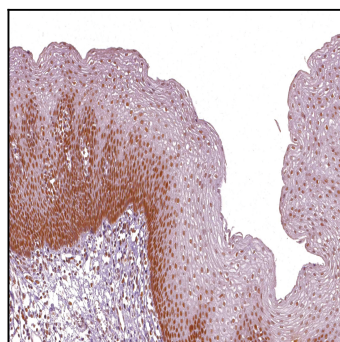


Figure 1: Immunohistochemical analysis of MSH2 (Clone: IHC410) on Esophagus