

44-1043: Anti-MLH1 Monoclonal Antibody (Clone:IHC409)-Ready to Use

Clonality :	Monoclonal
Clone Name :	IHC409
Application :	IHC
Reactivity :	Human
Gene :	MLH1
Gene ID :	4292
Uniprot ID :	P40692
Alternative Name :	MLH1,COCA2
Isotype :	Mouse IgG2a
Immunogen Information :	Recombinant Human MLH1

Description

"MutL Homolog 1 (MLH1) is a protein involved in the mismatch-repair pathway. This protein is commonly associated with hereditary non-polyposis colorectal cancer, as the MLH1 gene is frequently mutated in patients with this cancer. Studies have shown MLH1 to be deficient in a high percentage of patients with microsatellite instability, as well as endometrial and ovarian cancers. Use of Anti-MLH1 is optimized when paired in an IHC panel with MSH6, MSH2, and PMS2. Anti-MLH1 is useful in the detection of MLH1 in a number of normal and neoplastic tissues, and for identifying a loss of MLH1 in tumors that are microsatellite-unstable."

Product Info

Amount :	7 ml
Purification :	Protein A/G Chromatography
Content :	Tris Buffer, pH 7.3 - 7.7, with 1% BSA and <0.1% Sodium Azide
Storage condition :	Store at 2°C - 8°C. Do not freeze.

Application Note

This product is available in ready to use format, hence no dilution is required.

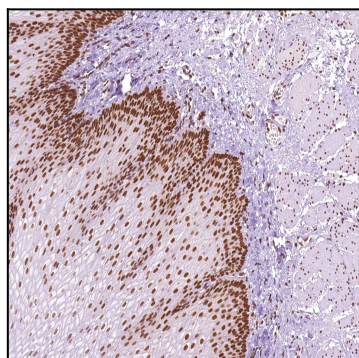


Figure 1: Immunohistochemical analysis of MLH1 (Clone: IHC409) on Esophagus