

## 44-1038: Anti-Ki-67 Monoclonal Antibody (Clone:IHC067)

<b>Clonality :</b>	Monoclonal
<b>Clone Name :</b>	IHC067
<b>Application :</b>	IHC
<b>Reactivity :</b>	Human
<b>Gene :</b>	MKI67
<b>Gene ID :</b>	4288
<b>Uniprot ID :</b>	P46013
<b>Format :</b>	Purified
<b>Isotype :</b>	Mouse IgG2b
<b>Immunogen Information :</b>	Recombinant Human Ki-67

### Description

"Ki-67 is a nuclear, non-histone protein that is expressed only during active phases of the cell cycle (G1, S, G2 and M), but not in the resting phases (G0 and G1 early phase). Although the antigen has also been associated with ribosomal RNA transcription, it is strongly linked to cell proliferation and has thus been indicated as an effective marker in grading the proliferation rate of tumors, including those of the brain, breast, cervix, and prostate."

### Product Info

<b>Amount :</b>	0.1 ml / 0.5 ml
<b>Purification :</b>	Protein A/G Chromatography
<b>Content :</b>	Tris Buffer, pH 7.3 - 7.7, with 1% BSA and <0.1% Sodium Azide
<b>Storage condition :</b>	Store at 2°C - 8°C. Do not freeze.

### Application Note

Recommended dilutions: Immunohistochemical analysis: 1:100 - 1:200. However, this need to be optimized based on the research applications.

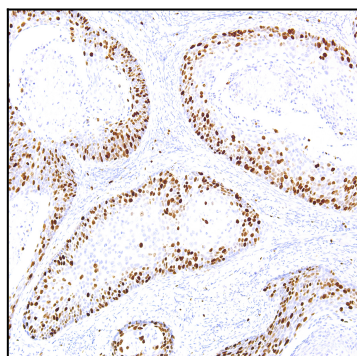


Figure 1: Immunohistochemical analysis of Ki-67 (Clone: IHC067) on Cervical Cancer - 10X

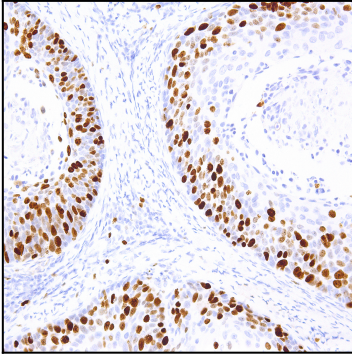


Figure 2: Immunohistochemical analysis of Ki-67 (Clone: IHC067) on Cervical Cancer - 20X

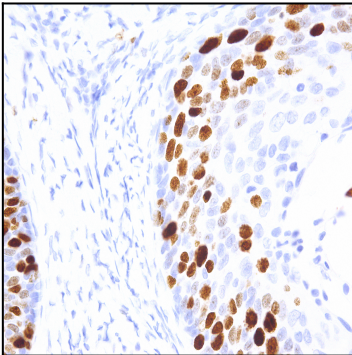


Figure 3: Immunohistochemical analysis of Ki-67 (Clone: IHC067) on Cervical Cancer - 40X