

44-1033: Anti-Her2/Neu Monoclonal Antibody (Clone:IHC002)(Discontinued)

Clonality :	Monoclonal
Clone Name :	IHC002
Application :	ELISA
Reactivity :	Human
Gene :	ERBB2
Gene ID :	2064
Uniprot ID :	P04626
Format :	Purified
Alternative Name :	ERBB2,HER2,MLN19,NEU,NGL
Isotype :	Mouse IgG2a
Immunogen Information :	Recombinant Human Her2/Neu

Description

The Her2/Neu (c-erbB-2) proto-oncogene is a transmembrane receptor tyrosine kinase that is clinically indicated in a number of carcinomas. Overexpression of the c-erbB-2 protein has been associated with ductal breast cancer, as well as pulmonary and gastric adenocarcinomas. A correlation between Her2 and p53 has also been documented, as overexpression of both proteins has been associated with early invasion and metastasis in bladder cancer.

Product Info

Amount :	0.1 ml / 0.5 ml
Purification :	Protein A/G Chromatography
Content :	Tris Buffer, pH 7.3 - 7.7, with 1% BSA and <0.1% Sodium Azide
Storage condition :	Store at 2°C - 8°C. Do not freeze.

Application Note

Recommended dilutions: Immunohistochemical analysis: 1:100 - 1:200. However, this need to be optimized based on the research applications.

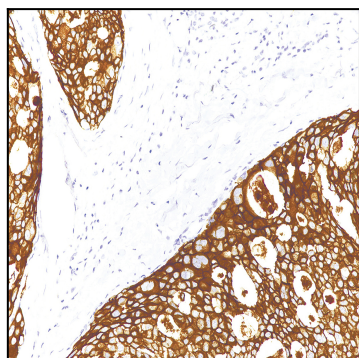


Figure 1: Immunohistochemical analysis of Her2/Neu (Clone: IHC002) on Breast