

## 44-1032: Anti-E-cadherin Monoclonal Antibody (Clone:IHC564)-Ready to Use

<b>Clonality :</b>	Monoclonal
<b>Clone Name :</b>	IHC564
<b>Application :</b>	IHC
<b>Reactivity :</b>	Human
<b>Gene :</b>	CDH1
<b>Gene ID :</b>	999
<b>Uniprot ID :</b>	P12830
<b>Alternative Name :</b>	CDH1,CDHE,UVO
<b>Immunogen Information :</b>	Recombinant Human E-cadherin

### Description

"E-cadherin is an intercellular adhesion molecule present in epithelial cells. Anti-E-cadherin stains glandular epithelium, as well as lung, gastrointestinal and ovarian adenocarcinomas. A panel of antibodies against E-cadherin and p120 is also used to differentiate ductal (membranous staining) and lobular breast cancer (cytoplasmic staining). Anti-E-cadherin also stains some thyroid cancers."

### Product Info

<b>Amount :</b>	7 ml
<b>Purification :</b>	Protein A/G Chromatography
<b>Content :</b>	Tris Buffer, pH 7.3 - 7.7, with 1% BSA and <0.1% Sodium Azide
<b>Storage condition :</b>	Store at 2°C - 8°C. Do not freeze.

### Application Note

This product is available in ready to use format, hence no dilution is required.

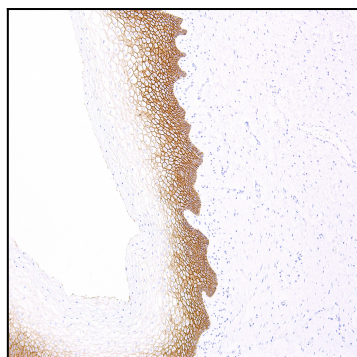


Figure 1: Immunohistochemical analysis of E-cadherin (Clone: IHC564) on Breast - 10X

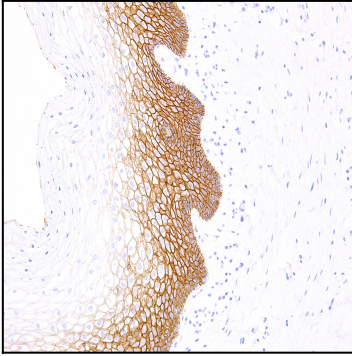


Figure 2: Immunohistochemical analysis of E-cadherin (Clone: IHC564) on Breast - 20X

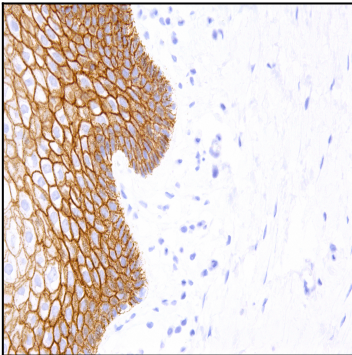


Figure 3: Immunohistochemical analysis of E-cadherin (Clone: IHC564) on Breast - 40X