

## 44-1015: Anti-CD138 Monoclonal Antibody (Clone:IHC138)

<b>Clonality :</b>	Monoclonal
<b>Clone Name :</b>	IHC138
<b>Application :</b>	IHC
<b>Reactivity :</b>	Human
<b>Gene :</b>	SDC1
<b>Gene ID :</b>	6382
<b>Uniprot ID :</b>	P18827
<b>Format :</b>	Purified
<b>Alternative Name :</b>	SDC1,SDC
<b>Immunogen Information :</b>	Recombinant Human CD138

### Description

Cluster of differentiation 138 (CD138), also known as Syndecan-1, is a transmembrane glycoprotein present on the surface of B-cells during late stage differentiation. Anti-CD138 is used to differentiate marginal zone lymphoma from lymphoplasmacytic lymphoma. ALK+ Large B-Cell Lymphoma (LBCL) commonly stains positively for CD138, but not for CD20 and CD79a. Anti-CD138 reacts positively with HHV8-associated primary effusion lymphoma that lack B-cell markers. CD138 is also a useful marker for identifying and enumerating benign, reactive, or malignant plasma cells from the bone marrow biopsy samples.

### Product Info

<b>Amount :</b>	0.1 ml / 0.5 ml
<b>Purification :</b>	Protein A/G Chromatography
<b>Content :</b>	Tris Buffer, pH 7.3 - 7.7, with 1% BSA and <0.1% Sodium Azide
<b>Storage condition :</b>	Store at 2°C - 8°C. Do not freeze.

### Application Note

Recommended dilutions: Immunohistochemical analysis: 1:100 - 1:200. However, this need to be optimized based on the research applications.

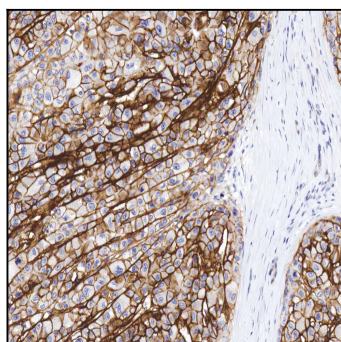


Figure 1: Immunohistochemical analysis of CD138 [Clone : IHC138] on Liver Cancer