

## 10-7652: Monoclonal antibody to SLC31A1 (Clone: ABM5D89)

<b>Clonality :</b>	Monoclonal
<b>Clone Name :</b>	ABM5D89
<b>Application :</b>	IHC,WB
<b>Reactivity :</b>	Human
<b>Gene :</b>	SLC31A1
<b>Gene ID :</b>	1317
<b>Uniprot ID :</b>	O15431
<b>Format :</b>	Purified
<b>Alternative Name :</b>	Copper transporter 1, Solute carrier family 31 member 1, COPT1, CTR1
<b>Isotype :</b>	Mouse IgG2b, Kappa
<b>Immunogen Information :</b>	Full length recombinant SLC31A1 protein was used as the immunogen for this antibody.

### Product Info

<b>Amount :</b>	25 µg / 100 µg
<b>Purification :</b>	Protein G Chromatography
<b>Content :</b>	25 µg in 50 µl/100 µg in 200 µl PBS containing 0.05% BSA and 0.05% sodium azide. Sodium azide is highly toxic.
<b>Storage condition :</b>	Store the antibody at 4°C; stable for 6 months. For long-term storage; store at -20°C. Avoid repeated freeze and thaw cycles.

### Application Note

Recommended dilutions: Western blot analysis: 1-2 µg/ml, Immunohistochemical analysis: 5 µg/ml. However, this need to be optimized based on the research applications.

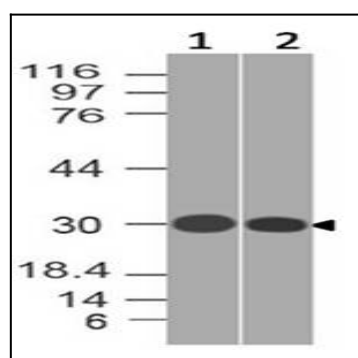


Figure-1: Western blot analysis of SLC31A1. Anti-SLC31A1 antibody (Clone: ABM5D89) was tested at 1 µg/ml on (1) T98G and (2) THP1 lysates.

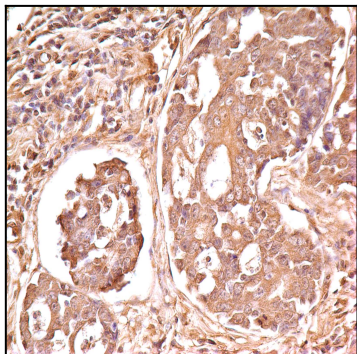


Figure-2: Immunohistochemical analysis of SLC31A1 in Adenocarcinoma cell of human Stomach using Anti-SLC31A1 antibody (Clone: ABM5D89) at 5  $\mu$ g/ml.

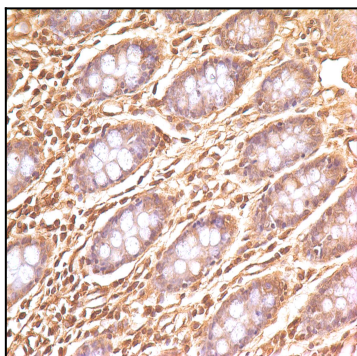


Figure-3: Immunohistochemical analysis of SLC31A1 in human Colon tissue using Anti-SLC31A1 antibody (Clone: ABM5D89) at 5  $\mu$ g/ml.

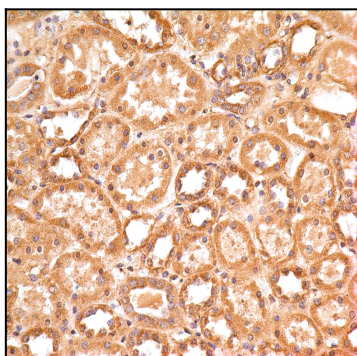


Figure-4: Immunohistochemical analysis of SLC31A1 in human Kidney tissue using Anti-SLC31A1 antibody (Clone: ABM5D89) at 5  $\mu$ g/ml.

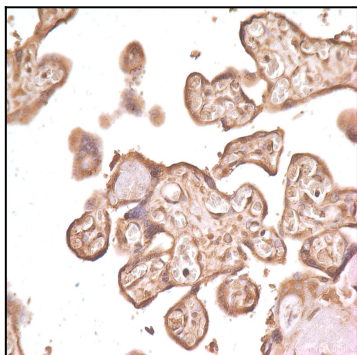


Figure-5: Immunohistochemical analysis of SLC31A1 in human Placenta tissue using Anti-SLC31A1 antibody (Clone: ABM5D89) at 5  $\mu$ g/ml.

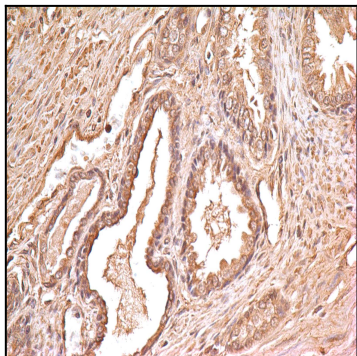


Figure-6: Immunohistochemical analysis of SLC31A1 in human Prostate tissue using Anti-SLC31A1 antibody (Clone: ABM5D89) at 5  $\mu\text{g/ml}$ .

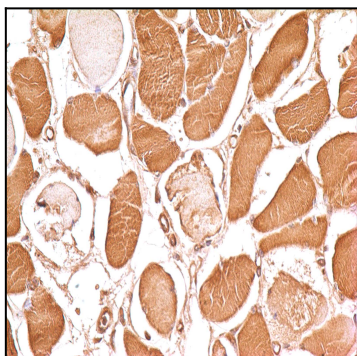


Figure-7: Immunohistochemical analysis of SLC31A1 in human Skin tissue using Anti-SLC31A1 antibody (Clone: ABM5D89) at 5  $\mu\text{g/ml}$ .

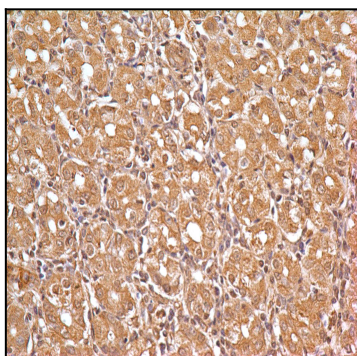


Figure-8: Immunohistochemical analysis of SLC31A1 in human Stomach tissue using Anti-SLC31A1 antibody (Clone: ABM5D89) at 5  $\mu\text{g/ml}$ .