

11-12039: Polyclonal Antibody to KLF8

Clonality :	Polyclonal
Application :	WB
Reactivity :	Human
Gene :	KLF8
Gene ID :	11279
Uniprot ID :	O95600
Format :	Purified
Alternative Name :	Basic krueppel-like factor 3, Zinc finger protein 741, BKLF3, ZNF741
Isotype :	Rabbit IgG
Immunogen Information :	A partial length recombinant KLF8 protein (amino acids 15-235) was used as the immunogen for this antibody.

Product Info

Amount :	25 µg / 100 µg
Purification :	Protein A Chromatography
Content :	25 µg in 50 µl/100 µg in 200 µl PBS containing 0.05% BSA and 0.05% sodium azide. Sodium azide is highly toxic.
Storage condition :	Store the antibody at 4°C, stable for 6 months. For long-term storage, store at -20°C. Avoid repeated freeze and thaw cycles.

Application Note

Recommended dilutions: WB: 0.1-0.5 µg/ml. However, this need to be optimized based on the research applications.

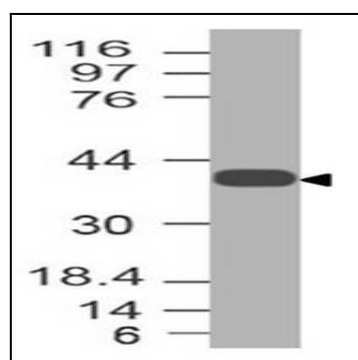


Figure-1: Western blot analysis of KLF8. Anti-KLF8 antibody (11-12039) was used at 0.1 µg/ml on HepG2 lysate.